

# ROTOR END PLATES

## FOR PERMANENT MAGNET EV MOTORS



Customizable



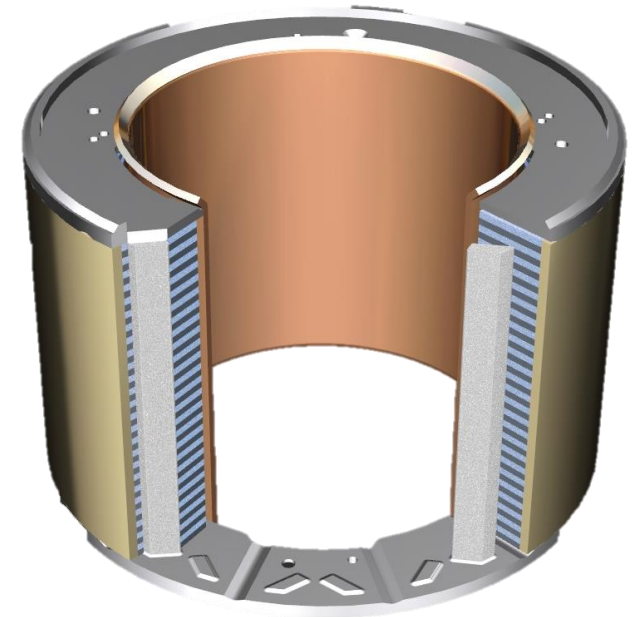
Easy Integration



Simple Design

BEST-IN-CLASS TECHNOLOGY FOR YOUR HIGH-PERFORMANCE EV MOTORS

- ✓ PM designs that allows for custom multilevel geometries
- ✓ Integrate features for retention, interlocking, and cooling
- ✓ Smooth ID/OD surfaces for improved staking, seating, and fit
- ✓ Multiple compatible materials in aluminum and stainless steel
- ✓ High efficiency and low scrap operation ideal for high volumes
- ✓ Proven processes to provide consistent quality



**INDUSTRY**  
Automotive EV Motors

**TECHNOLOGY**  
Powder Metallurgy

**MATERIAL**  
Aluminum/Stainless Steel

