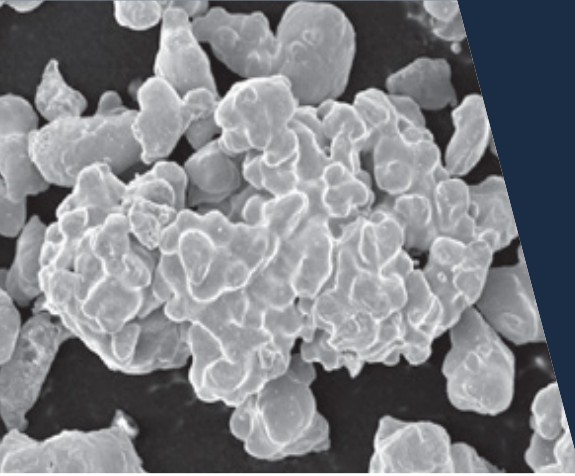


ANCORSTEEL AMH



Ancorsteel AMH is a low apparent density water atomized powder for structural applications. The spongy morphology of the powder particles gives the material superior green strength for an atomized powder combined with good compressibility.

www.gknpm.com

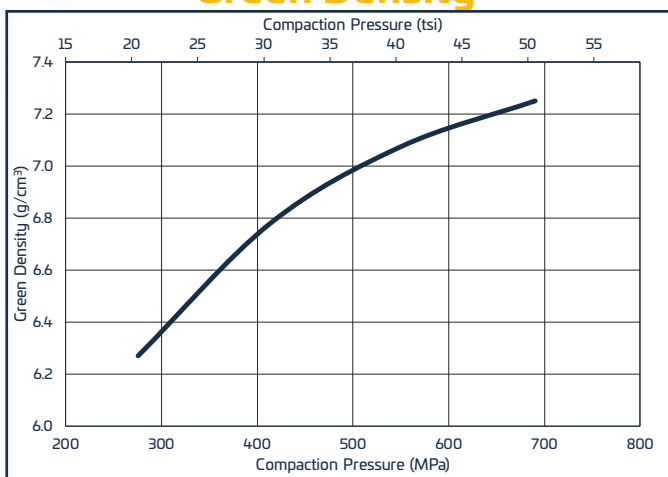
Nominal Chemistry (weight %)	
Iron	Manganese
Bal.	0.15

Typical Apparent Density (g/cm ³)
2.60

Typical Particle Size (weight %)				
Micrometers	+250	-250/+150	-150/+45	-45
U.S. Standard Mesh	(+60)	(-60/+100)	(-100/+325)	(-325)
	Trace	10	70	20

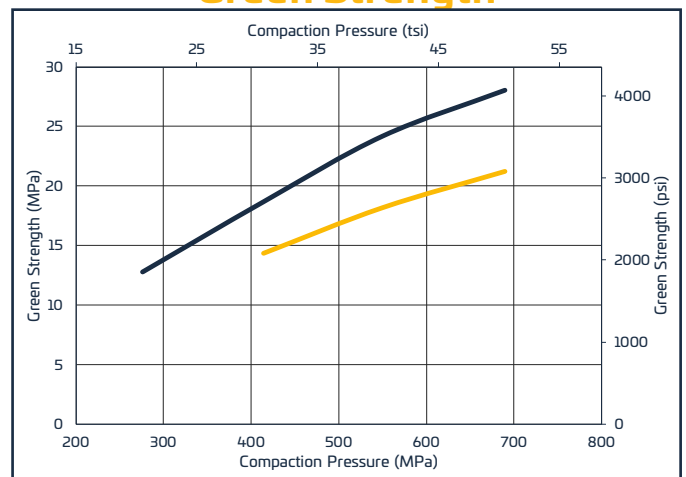
■ Ancorsteel AMH
■ Ancorsteel 1000

Green Density



(with 0.75 wt% EBS)

Green Strength



(with 0.75 wt% EBS)

© GKN Powder Metallurgy

This document is for informational purposes only and should not be considered as a binding description of the products or their performance in all applications. The product characteristics and performance data on this page represent standard products and depict their typical performance under controlled laboratory conditions. Actual performance will vary depending on the operating environment and application. GKN Powder Metallurgy reserves the right to revise its products and documents without notification. For product design to meet specific applications, dimensions, electrical and working points, please contact GKN Powder Metallurgy Marketing and Sales.